



X-Business
Complex [®]

About the Project

Doja Developments is focused on providing development implementation services to real estate, corporate and institutional clients. Our strategic advantage is derived from an entrepreneurial corporate structure that delivers best-of-class services and a broad diversity of project experience with low overhead costs. This experience and efficiency allow Doja developments to respond to changing market conditions and implement developments across a wide range of types and scale, quickly and effectively.

After the success of Aurora Mall in the New Administrative Capital, Doja Developments is proudly launching another project in one of the most prominent locations in the New Administrative Capital "X Business Complex".

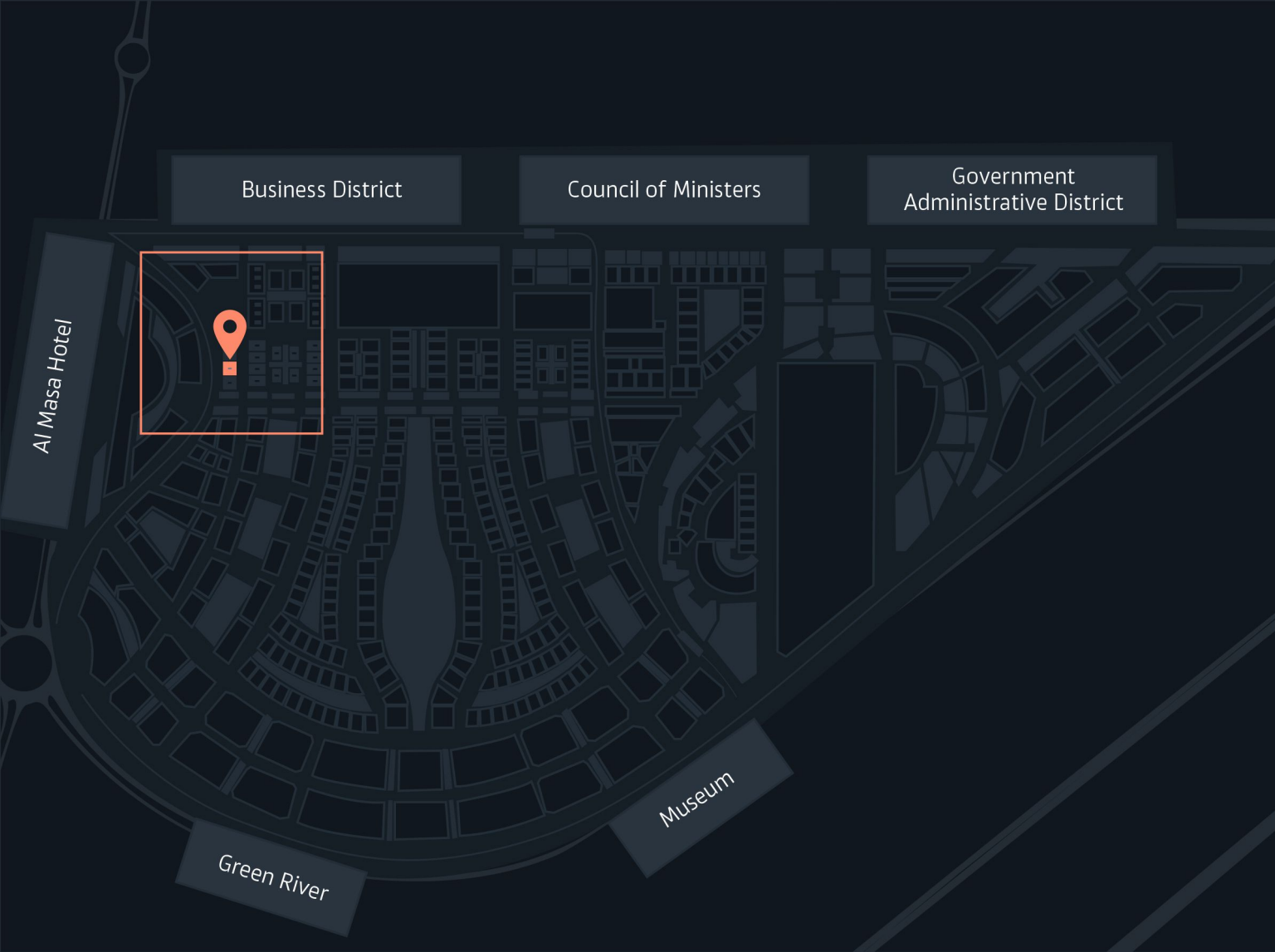
X Business Complex creates a successful business community and an ideal working environment. X Business Complex promotes the presence of small, medium, and large enterprises.



Location

Doja Development launches its second project at the New Capital, steps away from The Business District, Council of Ministers, Government Administrative District, and Al Masa Hotel.

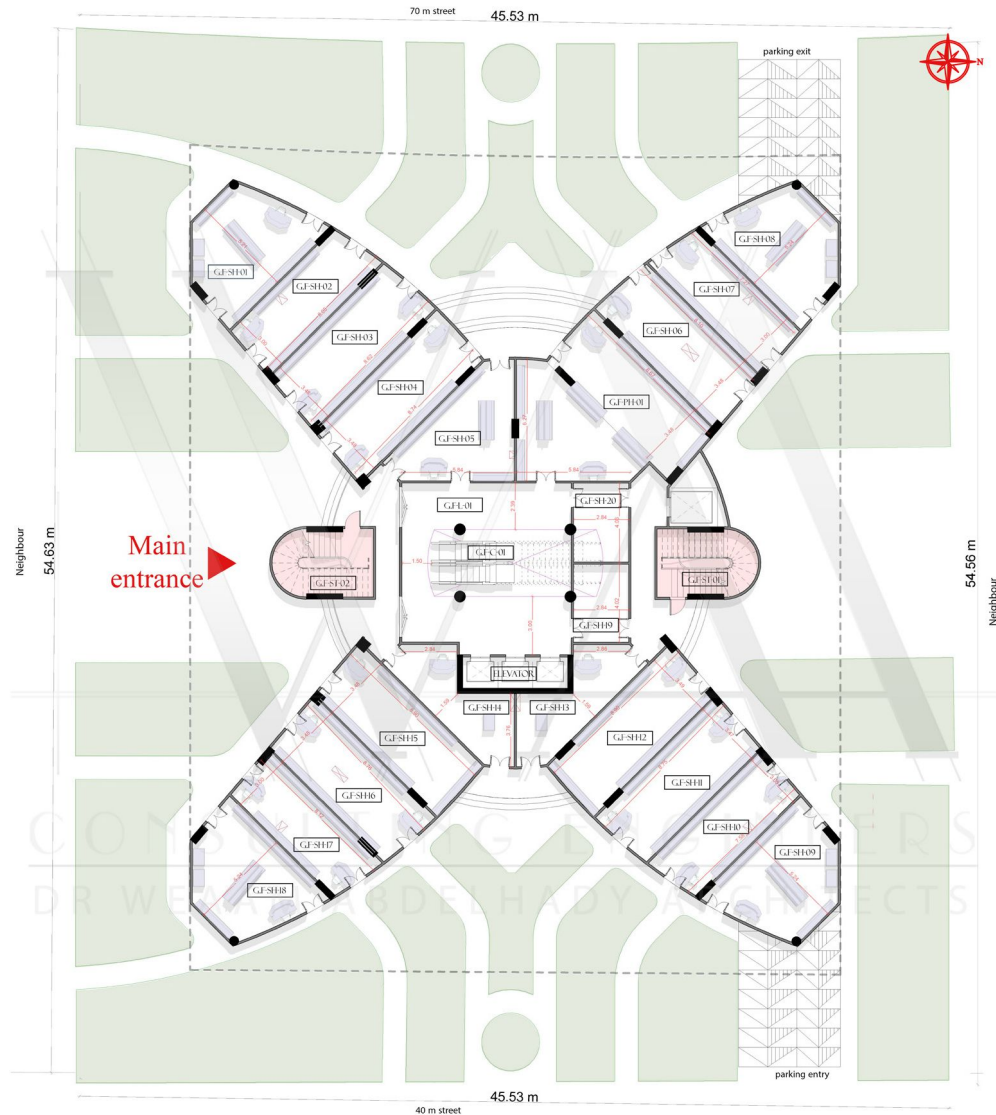
X Business Complex developed and tailored for your business needs!



Ground Floor

Key code

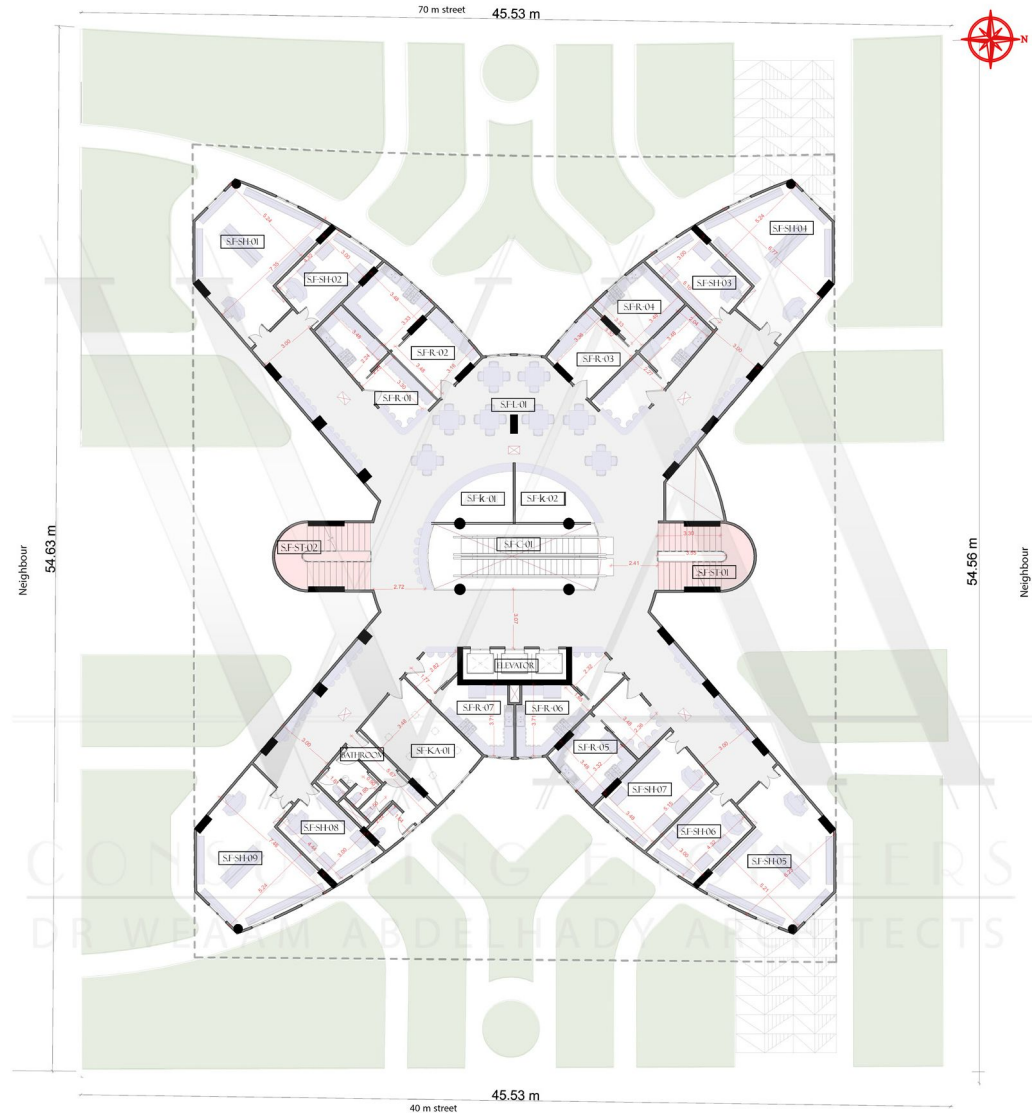
- G.F-SH: Ground Floor Shop
- G.F-PH: Ground Floor Pharmacy
- G.F-ST: Ground Floor Stairs
- G.F-L: Ground Floor Lobby
- G.F-C: Ground Floor Court



Second Floor

Key code

- S.F-SH: Second Floor Shop
- S.F-R: Second Floor Restaurant
- S.F-KA: Second Floor Kids Area
- S.F-ST: Second Floor Stairs
- S.F-L: Second Floor Lobby
- S.F-C: Second Floor Court



Renders



Facilities



Conference Center



Power Backup Generator



Information Desk



Solar Energy Powered



Gym



Air-conditioned



Storage Area



Fire Alarm System



Sky Lounge



Meeting Rooms



VIP Lounge



Business Center



High Speed Internet



Smart Clinics



Underground Parking



24 hours security system

Our Partners



Our Marketing Partners





Developed by

DOJA
DEVELOPMENTS